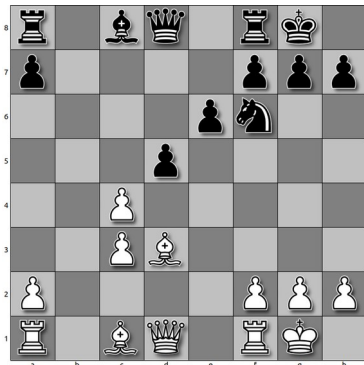


1. e4 c5 2. c4 Nc6 3. Ne2 Nf6 4. Nbc3 e6 5. d4 cxd4 6. Nxd4 Bb4 7. Nxc6 bxc6 8. Bd3 d5 9. exd5 Bxc3+ 10. bxc3 cxd5 11. O-O O-O (+0.95)



12. Bf4 ? (-0.5)

White should eliminate the c4 pawn immediately and try to advance the c3 pawn before it can be blocked.

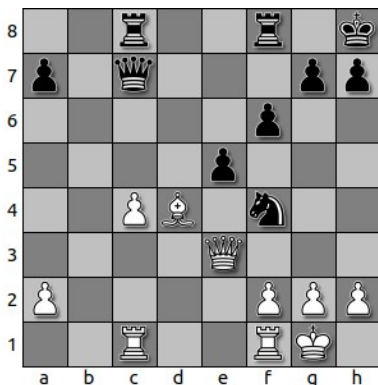
Example:

12. cxd5 Qxd5 13. c4 Qc6 14. Re1 Bb7 15. Bf1 Rfd8 16. Qb3
The d5 square can no longer be occupied by Black's Knight. White has now more room to move than was the case with the pawn on c3. His two bishops may become powerful.

12....Ba6 ! 13. Qe2 ? (-1.7) White should have played 13. cxd (- 0.4)

13.... dxc4 13... Rc8 was stronger. Example 14. cxd5 Bxd3 15. Qxd3 Nxd5 if 16. Bd2 Nxc3 (-1.5)

14. Bxc4 Bxc4 15. Qxc4 Rc8 16. Qb3 Nd5 17. Be5 f6 18. Bd4 Qc7 19. Rac1 Kh8 20. c4 Nf4 21. Qe3 e5 (-0.98)

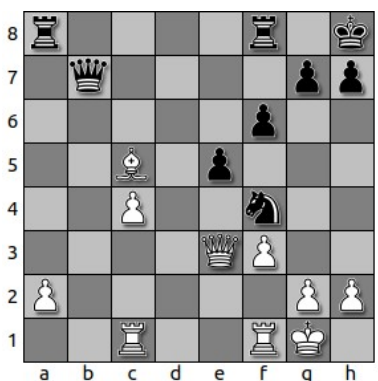


22. Bxa7 Qb7! Threatening checkmate and forcing f3 while positioning the Queen to invade along the b file.

23. f3 Ra8

The best defence was via 24. g3

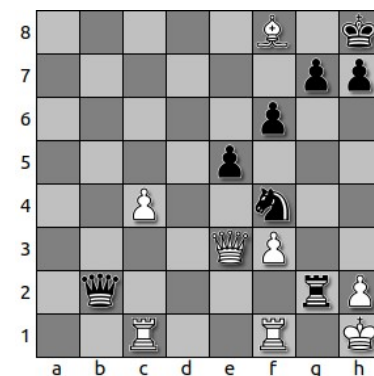
example: 24. g3 Ne6 25. Bb6 Rxa2 26. Rb1 (-1.2)



24. Bc5 Rxa2 25. Bxf8?

25..... Rxc2+
26. Kh1 Qb2 (-5.1)

25. Rf2 was necessary



27. Qg1 is losing but probably best, Example 27...g5 28. Rce1 Rxc1+ 29. Rxc1 Nd3

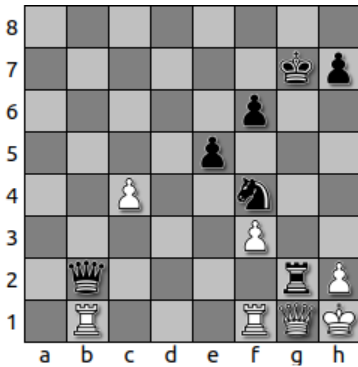
27. Bxg7+

Here both players were apparently under the impression that 27...KxB 28. Rg1 would favour White but 28...Kh6 is fatal for White.

27.... Kg8 (-2.6)

28. Qg1 Kxg7?

Best was: 28... Rxg1+ 29. Rxg1 Kf7 30. Bh6 Nd3 31. Rg7+ Ke6 32. Rg2 (-2.6)



29. Rb1 (0.0)

White can harass the Black Queen if she remains on the second rank.
If 29...Rxg1+ 30. Rxg1+ Kh6 31. Rxb2

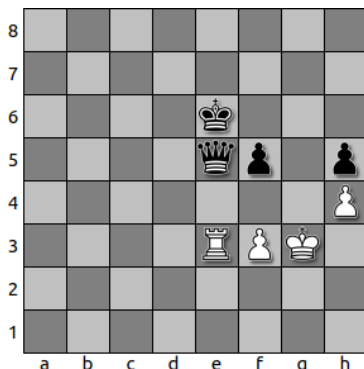
29.... Qe2

30. Rbe1 Qxc4

31. Qxg2+ Nxc2

32. Kxg2 h5

33. Re4 Qd5 34. Rfe1 Kg6 35. Kg3 Kg5 36. h4+ Kg6 37. R1e2 Qd7 38. Kg2 Kf5 39. R2e3 Qd2+
40. Re2 Qd7 41. R2e3 Ke6 42. Kf2 Qc7 43. Re2 Kd5 44. R2e3 Qb8 45. Kg3 Ke6 46. Kh3 Qd6
47. Kg3 f5 48. Rxe5+ Qxe5+ (0.0)



Here White needed to play 49. Kf2 to maintain the draw.

Example: 49. Kf2 Qxe3 or Kf2 f4
50. Kxe3 Ke5 Rxe5 Kxf5
51. f4+ Kd5 Ke2 Kd4
52. Kd3 Kd2

49. Rxe5+? Kxe5 50. Kg2 Kd4 51. Kf2 Kd3 52. Kg2 Ke2 0-1

Full Game Score

1. e4 c5 2. c4 Nc6 3. Ne2 Nf6 4. Nbc3 e6 5. d4 cxd4 6. Nxd4 Bb4 7. Nxc6 bxc6 8. Bd3 d5 9. exd5
Bxc3+ 10. bxc3 cxd5 11. O-O O-O 12. Bf4 Ba6 13. Qe2 dxc4 14. Bxc4 Bxc4 15. Qxc4 Rc8 16.
Qb3 Nd5 17. Be5 f6 18. Bd4 Qc7 19. Rac1 Kh8 20. c4 Nf4 21. Qe3 e5 22. Bxa7 Qb7 23. f3 Ra8
24. Bc5 Rxa2 25. Bxf8 Rxg2+ 26. Kh1 Qb2 27. Bxg7+ Kg8 28. Qg1 Kxg7 29. Rb1 Qe2 30. Rbe1
Qxc4 31. Qxg2+ Nxc2 32. Kxg2 h5 33. Re4 Qd5 34. Rfe1 Kg6 35. Kg3 Kg5 36. h4+ Kg6 37.
R1e2 Qd7 38. Kg2 Kf5 39. R2e3 Qd2+ 40. Re2 Qd7 41. R2e3 Ke6 42. Kf2 Qc7 43. Re2 Kd5 44.
R2e3 Qb8 45. Kg3 Ke6 46. Kh3 Qd6 47. Kg3 f5 48. Rxe5+ Qxe5+ 49. Rxe5+ Kxe5 50. Kg2 Kd4
51. Kf2 Kd3 52. Kg2 Ke2 0-1