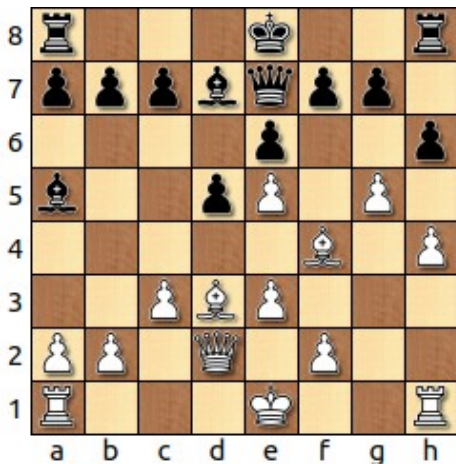
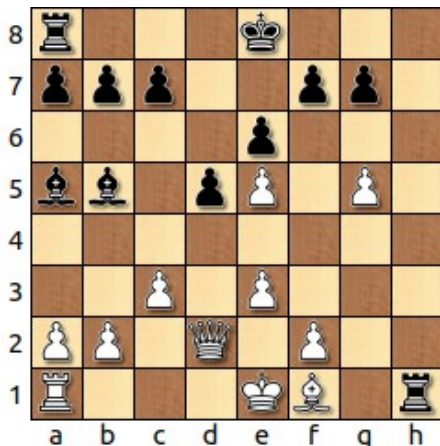


Not Mark Stokes versus Allan Fosse!

Queen Sacrifice?



Black played **14...0-0-0**. Should Black have played **14...hxg5 15. Bxg5 Qxg5 16. hxg5 Rxh1+ 17. Bf1 Bb5** when Black will win a rook, and two bishops for the Queen?



18. 0-0-0 is forced.

If 18... Bxf1 19. Re1 making way for the Queen to go to **d1** where it will threaten Black's Bishops simultaneous **eg: 19... Bg2 20. Rxh1 Bxh1 21. Qd1 Be4 22. Qa4+**

How does White win a Bishop after **18.... Rxf1?**

Eg 19. Rxf1 Bxf1 20. Qd1 Bb5 20. a4 Bd7 21. b4 Bb6 22. a5.

White seems to come out on top in all variations. The best that Black can do is to pick up a pawn for one of the bishops. So **14... 0-0-0 or 14...c5** were better options.